

# HOW EFFICIENT IS YOUR SUPPLY CHAIN?

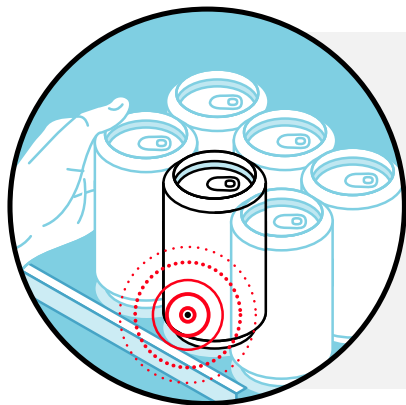
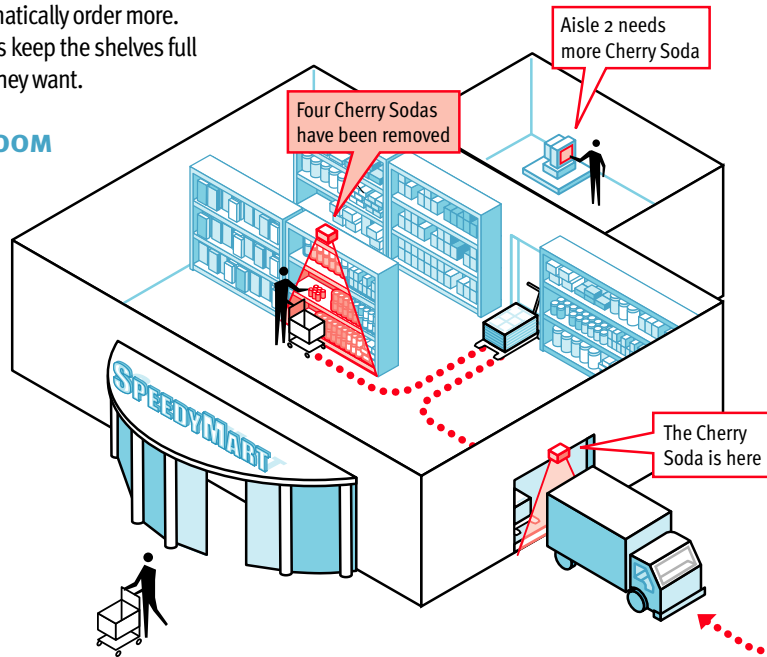
The EPCTM Network can track individual items throughout the supply chain, from manufacture to sale. This will revolutionize the way people buy, sell and distribute products. Here's how it works.

## 1. ON THE RETAIL FLOOR

The moment a customer takes a product from the shelf, "smart shelves" automatically order more. Stock people and distributors keep the shelves full so customers can buy what they want.

## AND IN THE BACK ROOM

The EPCTM Network tells the retailer exactly what's on the shelf and in the stock room as well as what's rolling off the truck. There is no need for clerks to maintain costly buffer stock or manually break a pallet down in order to check every case.

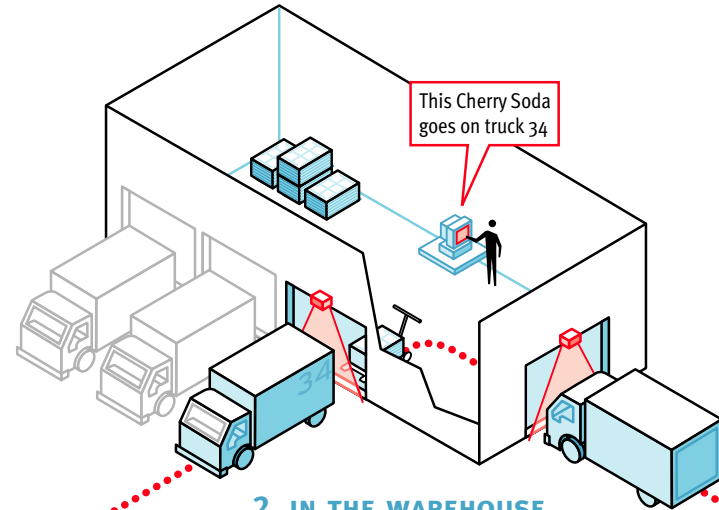


## HOW IT WORKS

Every item contains a microchip with a unique identifier — called an Electronic Product Code (EPC<sup>TM</sup>). This Radio Frequency Identification (RFID) tag allows precise tracking of the product. Cases and pallets can carry their own unique tags. Learn more about the EPCTM Network at the Auto-ID Center's web site at [autoidcenter.org](http://autoidcenter.org).

## 2. IN THE WAREHOUSE

The warehouse manager quickly routes shipments to the right place because he can look up what's in the warehouse and on every truck. Duplicate and missed shipments are a thing of the past.



## 3. IN THE PLANT

Manufacturers organize their runs based on up-to-date information and know an item's destination as it comes off the line. If an incident involving a defect or tampering arises, only the affected products need to be recalled.

